

# Operating Instructions for Reka Hot-Melt Glue Applicators

**MS 80**



**MS 150**



## Table of Contents

1.	Product Description	3
2.	General Safety Instructions	4
3.	Safety Measures to be taken during Operation	5
4.	Start-up and Control	6
5.	Cleaning and Maintenance	8
6.	Trouble-Shooting	9
8.	Environmental Protection	10
9.	CE Declaration of Conformity	11

## Glue Applicators

### Spare Parts | Technical Data | Accessories

10.	MS 80	14
11.	MS 150	16

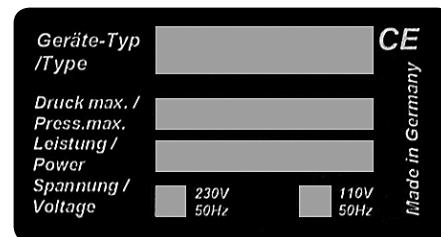
# Product Description



Dear customer,

the glue applicator you purchased will help you to glue parts together more easily and more rapidly. To ensure an optimum usage of the glue applicator we recommend that you read these instructions thoroughly before using the applicator for the first time.

The type of your applicator can be taken from the nameplate fitted to the side of the casing.



Eggenstein-Leopoldshafen, December 1, 2009

## Intended Use

The applicator works with hot glue which is dispensed by a mechanical conveying system. Therefore, this glue applicator should only be used by qualified persons who have been familiarized with the proper use and the safety precautions. Handling the applicator properly will avoid unnecessary accident hazards and problems.

Bodily injury or material damage caused by not using the glue applicator as intended shall not be the manufacturer's, but the user's responsibility.

# General Safety Instructions

## Care and Diligence of the User

The glue applicator has been designed and fabricated in conformity with the applicable harmonized standards and additional technical specifications. So, it is state of the art and ensures maximum safety. This safety, however, can only be achieved in the operational practice, if all the necessary measures are taken. The user of the equipment shall be obliged to plan these measures and to make sure that they are taken.

### In particular, the user shall ensure that

- the applicator to be used is in good working order
- the personal protective equipment (protective gloves, safety goggles) required for the operating personnel is available and used
- the operating instructions are in legible condition and available to the operator
- only sufficiently qualified and authorized personnel operates and maintains the applicator
- this personnel is regularly instructed in the applicable regulations of operational safety and environmental protection and knows the operating instructions and, in particular, the included safety instructions.

## Making the Information Available

This operating manual shall always be kept at the place of operation of the applicator. Be sure that all persons handling the applicator can consult the instructions at any time. In addition to this operating manual, there must be available instructions regarding legal and other mandatory regulations relating to accident prevention and to relevant requirements of the employers' liability insurance association.

## Safety Symbols

This operating manual gives concrete safety instructions to alert the user to remaining unavoidable hazards. These hazards imply dangers to

- persons
- product and equipment

### Meaning of the Symbols used in the Manual



This symbol indicates that there is, above all, danger to persons, but also to equipment and material.



Caution: hot surface!

Accident Prevention Regulation VBG 125 – W26  
Hot surfaces such as machine parts, tanks or materials, but also hot liquids cannot always be perceived. The utmost caution is advised when this symbol is attached to a component. Wear protective gloves **whenever** you have to touch hot surfaces.



Wear protective gloves and safety goggles **when-**  
**ever** you work with the applicator.



To avoid accidents lay the cables so that they will not cause any risk of stumbling.

The equipment must only be used by trained, instructed and authorized persons. These persons must have read the operating instructions and be able to work accordingly. Before using the applicator, check it for visible damage and make sure that it is only used when in proper and safe condition. Notify detected defects to your superior immediately.

## Safety Instructions for the Operation of the MS 80 and MS 150 Hot-Melt Glue Applicators



Wear protective gloves and safety goggles whenever you work with the applicator.



Avoid accidents by stumbling – Lay all cables, hoses and conducts so that they will not cause any risk of stumbling. For this, install cable ducts and bridges.

- Only fill the tank up to just under the upper rim.
- **Never** exceed the operating temperature of the hot-melt. This temperature is indicated in the technical datasheet of the hot-melt. Overheating may lead to decomposition which may affect the health of the user as well as the operability of the applicator.
- Once the applicator has warmed up, nozzle and lid are very hot.
- **Never** start working before fitting a nozzle first.
- Unplug the connecting cable, before replacing a nozzle. Warning: risk of burns! When a nozzle is replaced, liquid glue might leak out.
- **Never** bring the hot nozzle into contact with the cable.
- **Never** direct the glue jet towards people.
- When your skin got into contact with hot glue, cool it with cold water immediately. Do not try to remove the hot-melt from the skin first. If necessary, consult a doctor. When hot adhesive got into your eyes, immediately cool them under running water for about 15 minutes and consult your doctor at once.
- Always deposit the glue applicator on the stand provided for this purpose.
- Do not lay the applicator on its side.
- **Never** hold nozzle top upward.
- Do not carry out overhead work.
- Stop using the equipment, if the casing is damaged due to shock, breakage or heavy wear.
- Do not feed solvents or paraffin. Risk of explosion!

# Start-up and Control



Avoid accidents by stumbling – Lay all cables, hoses and conducts so that they will not cause any risk of stumbling. For this, install cable ducts and bridges.



Wear protective gloves and safety goggles whenever you work with the applicator.



**Never** direct the glue jet towards people!

**Never** lay the hot-melt applicator on its side.

Do not hold the nozzle top upward.

Do not carry out overhead work.

Do not start working, before fitting a nozzle first.

Only open the lid when the applicator has warmed up.

Do not overcharge the applicator; only fill it just under the rim.

Stop using the equipment, if the casing is damaged due to shock, breakage or heavy wear.

The glue applicator must only be used/applied for its intended purpose. Please read the chapter „General Safety Instructions“. If it is not used as intended, this may cause bodily injuries or equipment damages. Disregard of the safety instructions for the use of the applicator may lead to serious burns.

## Glue Applicator MS 80

The MS 80 glue applicator is factory-set to 190 °C. The temperature is infinitely adjustable at the rear side of the instrument, using a screw driver. The right-end stop is the maximum temperature of 200 °C.

## Glue Applicator MS 150

The temperature of the MS 150 glue applicator may be infinitely set up to 200 °C. For this, set the rotary button to the requested position:

4	= ~	approx. 70°C	10	= ~	approx. 160°C
6	= ~	approx. 100°C	12	= ~	approx. 190°C

Minor leaking out of the nozzle during the heat-up period is caused by the hot-melt expanding in the nozzle/heating chamber.

## Loading Hot-Melt

- The MS 80/150 glue applicators must only be used to dispense non-reactive hot-melts. **Never** feed other materials. The hot-melt glue applicator is capable of working with all non-reactive hot-melt types which are designed for working temperatures of up to max. 200 °C.
- After the end of the heat-up period (approx. 10 min.), open the lid and load granulate up to just under the lower rim of the feeding opening.
- Shut the lid and allow the applicator to melt the glue.

## Applying Hot-Melt



Wear protective gloves and safety goggles whenever you work with the applicator.



**Never** start working before fitting a nozzle first.

**Never** direct the glue jet towards people!

Do not start working before the glue has molten. Badly molten glue is thick and it needs a lot of force to press it off the applicator. Doing so would damage the applicator.

Always deposit the glue applicator on the wire stand provided for this purpose.

The glue applicator must not be laid on its side.

Do not open the lid before the applicator has warmed up.



When your skin got into contact with hot glue, cool it with cold water immediately. Do not try to remove the hot-melt from the skin first. If necessary, consult a doctor. When hot adhesive got into your eyes, immediately cool them under running water for about 15 minutes. Consult your doctor at once!

Make yourself familiar with applicator first. Apply a little glue in varying forms on a piece of paper or cardboard; for example dots and beads. Always keep the working temperature of the specific hot-melt glue. This temperature is indicated in the technical datasheet of the hot-melt glue.

The quantity to be applied is determined by pressing the trigger: the longer you press, the more glue flows out.

## Replacement of Nozzles



Warning: risk of burns!

When your skin got into contact with hot glue, cool it with cold water immediately. Do not try to remove the hot-melt from the skin first. If necessary, consult a doctor. When hot adhesive got into your eyes, immediately cool them under running water for about 15 minutes. Consult your doctor at once!



For your own safety wear protective gloves and safety goggles when you replace nozzles.



Always unplug the applicator before replacing a nozzle!

Only replace nozzles when the glue applicator is warm (instrument temperature 60–80 °C) and empty. Replacing a nozzle when the applicator is cold may damage the equipment. Replacing the nozzle when the applicator is too hot, causes liquid glue to flow out. The melting range as well as the melting point of the used glue may be taken from the technical datasheet of the respective glue.

# Cleaning and Maintenance

**Never** fill soiled glue into the melting tank. If you observe all advices given in the operating manual, the glue applicator does, normally, not need cleaning. The non-reactive glue contained in the applicator will remelt and can be used for gluing again.

The working temperature of the respective glue may be taken from the technical datasheet which can be procured from the producer of the glue. This temperature must not be exceeded, otherwise the glue may coke in the glue applicator. Hot-melts on a polyamide basis are particularly sensitive. If the glue has coked, the applicator with should be cleaned with REKA cleaning liquid (article 3519).

**Never** clean the applicator with solvent, benzine, benzene, toluene, acetone, turpentine, etc. risk of explosion!

If the applicator is used very often, we recommend to have it maintained regularly. For this, fix a date with our service department.



## List of possible fault indications and assistance in trouble-shooting

In case of damage, send the glue applicator to Reka, indicating type and serial no. of your applicator. We shall not be responsible for any repair made by yourselves.

Fault	Possible cause / operating error	Measures to be taken
No or too little glue comes off though the heat-up time has been kept exactly	<ul style="list-style-type: none"><li>• Clogged nozzle</li><li>• Temperature too low</li></ul>	<ul style="list-style-type: none"><li>• Unscrew the nozzle, clean or replace it</li><li>• Check the temperature</li></ul>
The glue is too fluid or too thick	<ul style="list-style-type: none"><li>• Applicator temperature too high or too low</li></ul>	<ul style="list-style-type: none"><li>• Check the temperature</li></ul>
Glue leaks out of nozzle	<ul style="list-style-type: none"><li>• Clogged nozzle</li></ul>	<ul style="list-style-type: none"><li>• Unscrew the nozzle, clean it carefully or replace it. Unscrew the nozzle at operating temperature; wear gloves (risk of burns)</li></ul>
The applicator does not heat up	<ul style="list-style-type: none"><li>• The applicator is switched off</li></ul>	<ul style="list-style-type: none"><li>• Is the applicator properly connected to power?</li></ul>

# Environmental Protection



**Never** throw electric tools in the domestic waste. According to the European directive 2002/96/EC for used electric and electronic devices and according to national regulations, used electric tools must be collected separately and treated in an environmentally compatible way for re-use.

Reka packing material can be recycled completely.

Please take instructions for the disposal of hot-melt glues and hot-melt cartridges from the respective safety datasheet.

## **Additional Information**

Do you have any more questions or requests? We should be glad to help you.

Please contact us by  
Phone +49 (0)721/970780

Telefax +49 (0)721/705069

E-mail: [sale@reka-klebettechnik.de](mailto:sale@reka-klebettechnik.de)

Our mailing address is:

Reka Klebettechnik GmbH & Co. KG  
Siemensstr. 6  
D-76344 Eggenstein

Internet: <http://www.reka-klebettechnik.de>

# CE Declaration of Conformity



Product: **Hot-Melt Glue Applicators**

Types: **MS 80**  
**MS 150**

This is to certify that the above applicators in the design marketed by us are in conformity with the following EC directives:

**until 15-01-2007: 73/23/EEC, from 16-01-2007: 2006/95 EC**  
**until 19-07-2009: 91/368 EEC, from 20-09-2009: 2004/108 EC**  
**until 28-12-2009: 89/336 EEC, from 29-12-2009: 2006/42 EC**  
**2002/95/EC**

The following standards have been applied:

**IEC CISPR14**  
**IEC 60335**  
**IEC 60204**  
**IEC 61000**

This declaration of conformity shall get invalid, if the product is

- modified, extended, or otherwise changed without express approval of Reka Klebetechnik
- and/or other components than accessories of Reka Klebetechnik are fitted,
- and if the product is not connected or used as intended.

Eggenstein, September 1, 2009

Christa Armbruster  
*Management Purchasing and Production*



# Reka Hot-Melt Glue Applicators

Spare Parts | Technical Specifications | Accessories

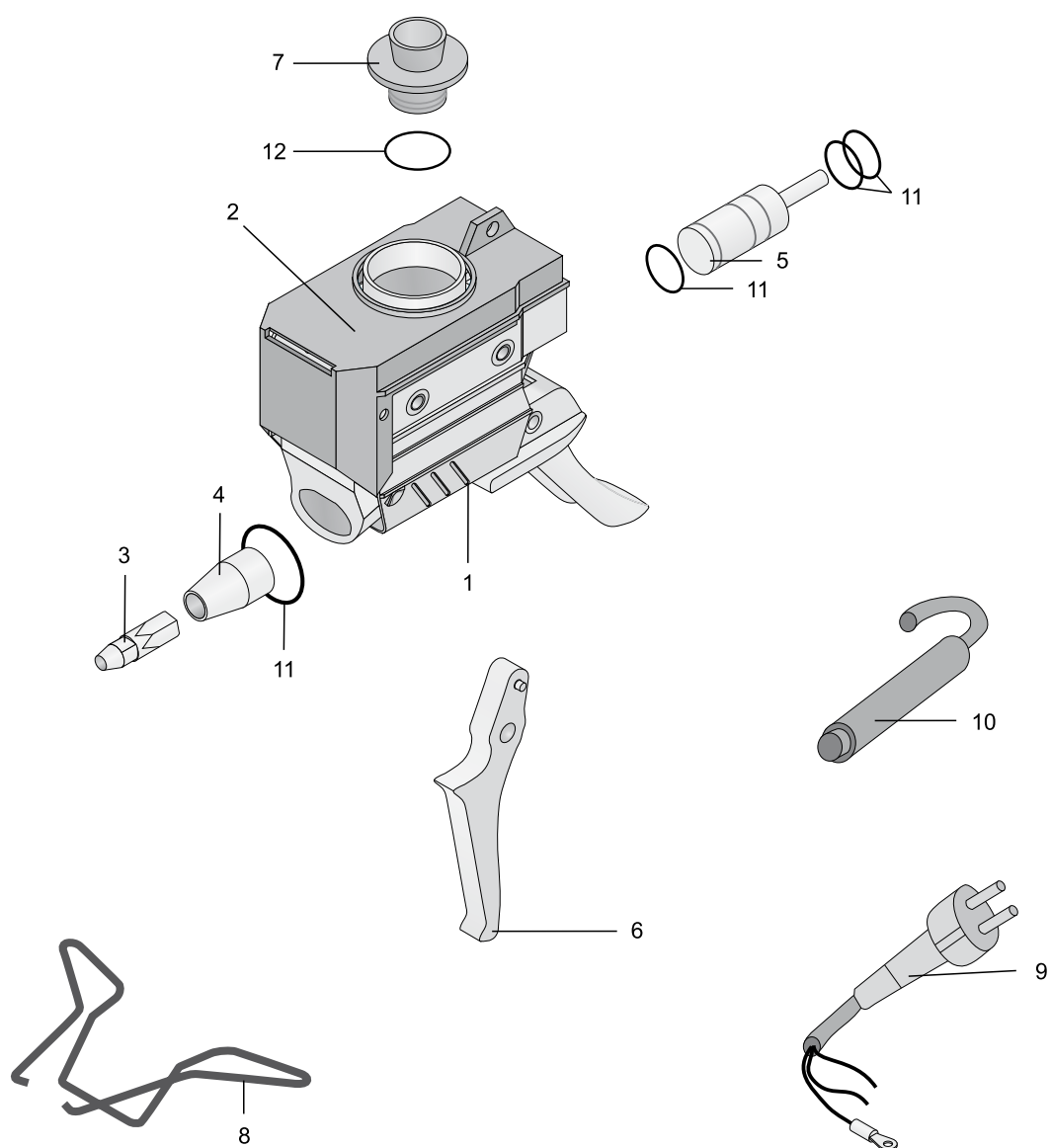


**MS 80**



**MS 150**

# MS 80



# Legend for Glue Applicator MS 80 – Art. 5551 (230 V), 5560 (120 V)

Item	Article		Item	Article	
1	<b>3859</b>	Casing cpl.	10	<b>3858</b>	Bend protection
2	<b>3861</b>	Cap	11	<b>3791</b>	O-ring 20x2,5
3	<b>3911</b>	Nozzle No. 2	12	<b>3827</b>	O-ring 28x3,5
4	<b>3759</b>	Exit piece			
5	<b>3762</b>	Piston cpl.			
6	<b>3939</b>	Trigger cpl.			
7	<b>3885</b>	Lid cpl.			
8	<b>3882</b>	Stand			
9	<b>3783</b>	Cord for 230 V			
	<b>3886</b>	Cord with UL-Plug for 120 V			

MS 80

## Technical Specifications

Denomination	MS 80
Article number	<b>5551</b> (230 V), <b>5560</b> (120 V)
Weight	750g
Power supply	230 V / 50 Hz, 120 V / 60 Hz
Power consumption	200 Watt
Current consumption	0,9 A
Degree of protection	I
Class of protection	IP 30
Temperature control	Thermostat
Temperature limitation	20-200 °C
Temperature constancy	+/- 5 °C
Operating temperature	10 min.
Tank capacity	150 ml
Conveying system	Mechanics
Length of electric cable	1,8 m
Recommended melts	Hot-melt granulate and pillows

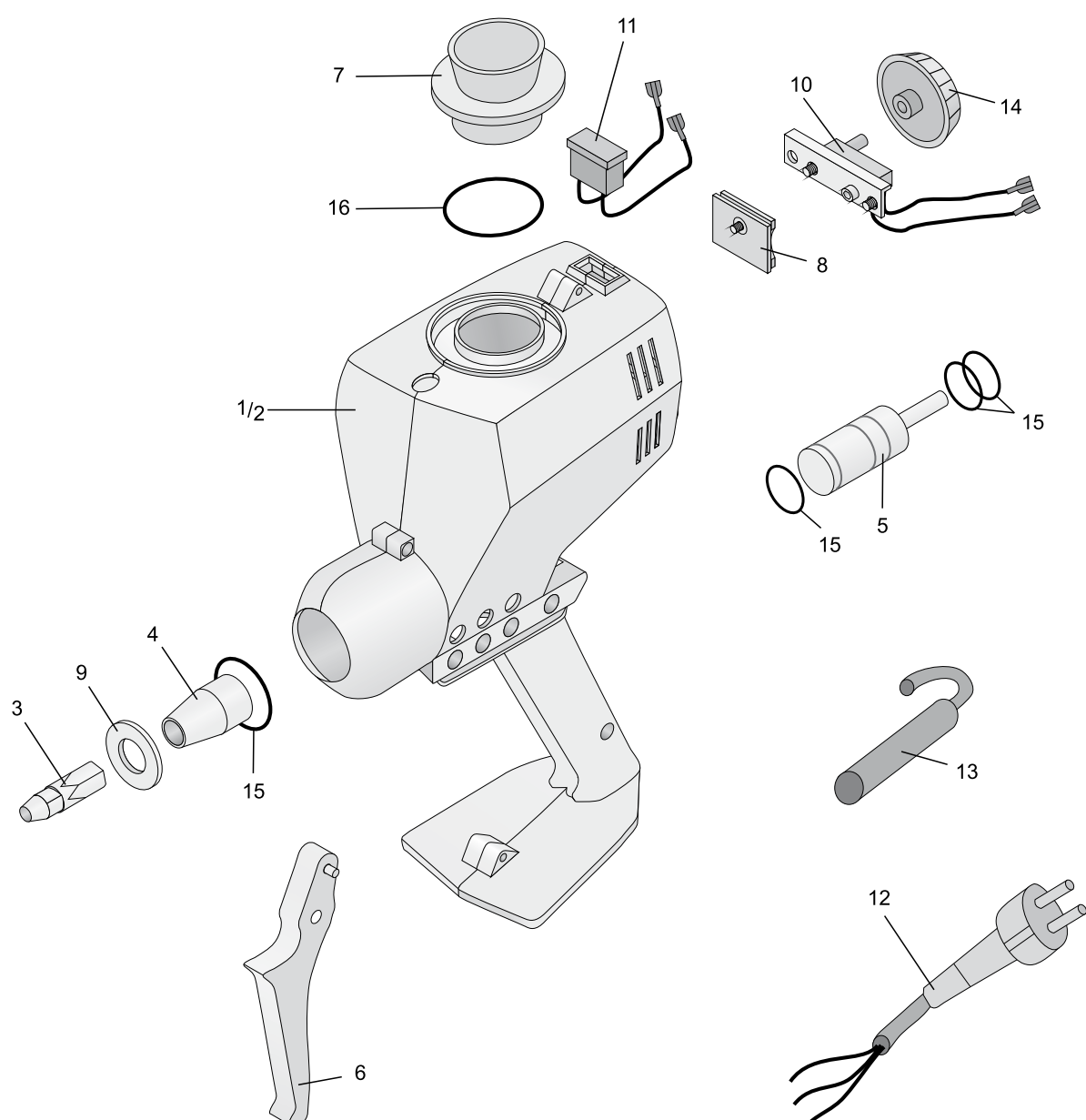
## Accessories (optional)

Balancer **art. 3544** Download our full nozzle range at [www.nozzles.reka-klebetchnik.de](http://www.nozzles.reka-klebetchnik.de)



More accessories like cleaning liquid or a funnel can be found at [www.reka-klebetchnik.de](http://www.reka-klebetchnik.de)

# MS 150





# Legend for Glue Applicator MS 150 – Art. 5552 (230 V), 5557 (120 V)

Item	Article		Item	Article	
1	<b>3751</b>	Casing left	12	<b>3783</b>	Cord for 230 V
2	<b>3752</b>	Casing right		<b>3886</b>	Cord with UL-Plug for 120 V
3	<b>3911</b>	Nozzle No. 2	13	<b>3785</b>	Bend protection
4	<b>3759</b>	Exit piece	14	<b>3959</b>	Adjusting knob
5	<b>3762</b>	Piston cpl.	15	<b>3791</b>	O-ring 20x2,5
6	<b>3764</b>	Trigger cpl.	16	<b>3805</b>	O-ring 32x3,5
7	<b>3766</b>	Lid kpl.			
8	<b>3771</b>	Connector plate cpl.			
9	<b>3776</b>	Washer			
10	<b>3889</b>	Thermostat			
11	<b>3781</b>	Indicator lamp for 230 V			
	<b>3782</b>	Indicator lamp for 120 V			

## Technical Specifications

Denomination	MS 150
Article number	<b>5552</b> (230 V), <b>5557</b> (120 V)
Weight	1200g
Power supply	230 V / 50 Hz, 120 V / 60 Hz
Power consumption	200 Watt
Current consumption	0,9 A
Degree of protection	I
Class of protection	IP 30
Temperature control	Thermostat
Temperature limitation	20-200 °C
Temperature constancy	+/- 5 °C
Operating temperature	10 min.
Tank capacity	220 ml
Conveying system	Mechanics
Length of electric cable	1,8 m
Recommended melts	Hot-melt granulate and pillows

## Accessories (optional)

Balancer **art. 3544** Download our full nozzle range at [www.nozzles.reka-klebetchnik.de](http://www.nozzles.reka-klebetchnik.de)



More accessories like cleaning liquid or a funnel can be found at [www.reka-klebetchnik.de](http://www.reka-klebetchnik.de)

**MS 150**

Händler / Dealer

**Reka Klebetechnik GmbH & Co. KG**  
**Siemensstraße 6      D-76344 Eggenstein**

Telefon +49 (0)721/970780

Telefax +49 (0)721/705069

E-Mail: [sale@reka-klebetechnik.de](mailto:sale@reka-klebetechnik.de)

Internet: <http://www.reka-klebetechnik.de>